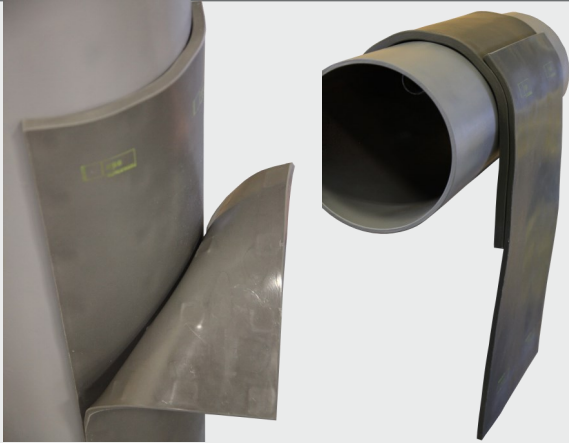


Magnetic Shielding

npe®

A BRAND OF
EICHROM TECHNOLOGIES

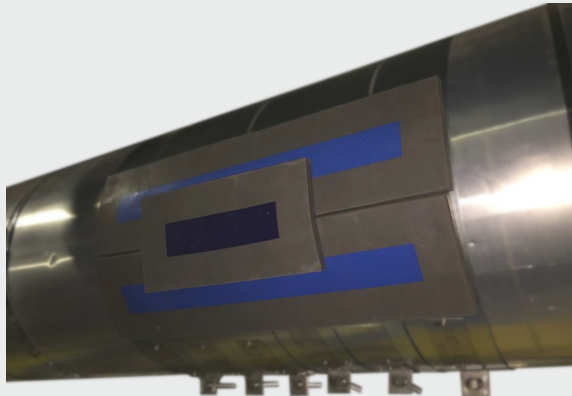


Mag-Flex®

Mag-Flex® combines tungsten and high strength magnets to allow placement of 2 layers of shielding on any carbon steel surface. Standard sizes are 24" x 6" x (thickness) and 12" x 6" x (thickness), both are 10 lb per square foot. Custom sizes are available.

Custom Magnetic T-Flex®

Outside of standard shapes and sizes, magnets can be embedded into T-Flex® to help aid with assembly and installation of custom shaped pieces. Cutouts and flaps remain securely in place, making aligning these elements an easy task. Larger tiles hold in place until a secondary and permanent means of securing the pieces can be applied, such as cable ties or steel banding.



Tiles with cutout around a personnel monitor



2" thick magnetic tiles replacing lead wool blankets around a valve.



Magnetic Shielding

npe[®]

A BRAND OF
EICHROM TECHNOLOGIES



Magnetic Lead Wool Blankets

Magnets can be added to the back side of lead wool blankets. Each magnet is reinforced within the PVC cover. Magnets will remain securely embedded and will not slide around beneath the PVC cover. Magnetic lead wool blankets make installing shielding on large carbon steel surfaces, especially curved ones, a much simpler task.

Common applications

- Curved carbon steel surfaces
- Gaps around protrusions
- Steam generators
- Around interferences
- Where there are no access to hooks or scaffold

